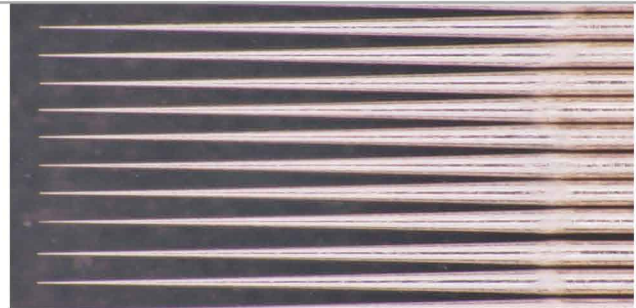
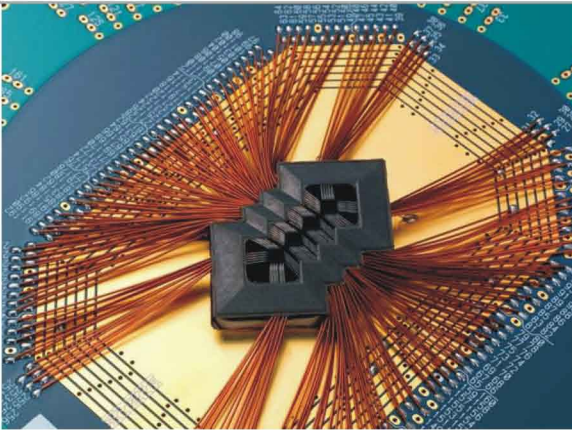


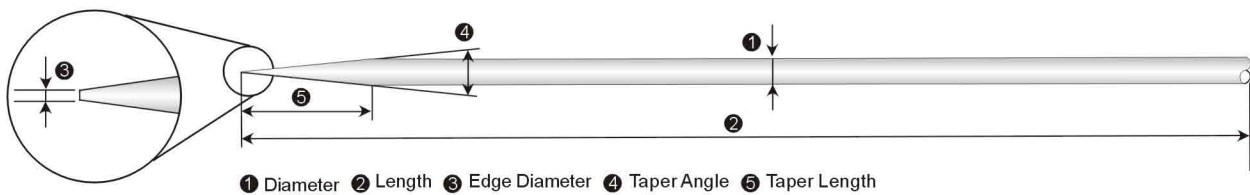
Probe Card Pin

Typical configuration for probe card pin



tip has been high precisely machined

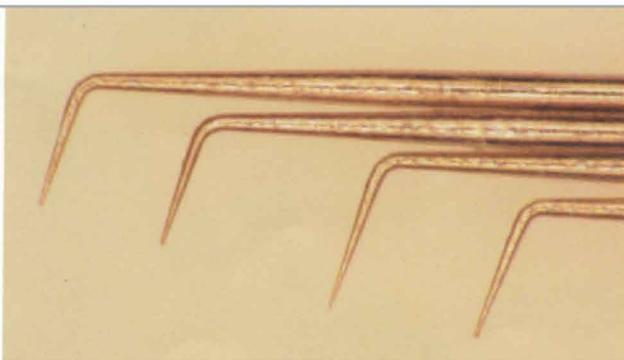
Φ0.1X61mm Taper length: 4mm Material: W
Edge Diameter: 0.005mm



Materials	W • ReW, BeCu etc.
Diameter	Please contact us for availability.
Applications	Test process for LCD and Semiconductors

We will be flexible to your requirements on material, diameter and tip configuration.

Edge bending



We have successfully established tip bending process for probe card pins.

We have enhance your reduction for both cost and process with our mass production capability of highly precise probe card pins includes tip bending